

Maximize Your Automation and Process Investment

## Advantages

- Secure access to the control system
- Prevent unauthorized or unwanted changes that could impact your production
- Satisfy regulatory compliance with complete audit trail of changes made to the system
- Access reports highlighting detailed changes made to program files for Rockwell Automation devices
- Maintain complete version control for all system files
- Minimize system downtime due to failed device by leveraging disaster recovery capability
- Confirm the correct and validated program is currently loaded in a device
- Scan network and discover devices (firmware) and software packages running in your plant
- Web client to visualize status of the schedule runs and logs from any mobile
- Extend coverage by adding support for 3rd party vendor devices that are not natively supported
- Reduce time to complete process

*Monitoring control system changes using FactoryTalk AssetCentre, a supervisor noted the change in the audit log and found it was harmful to the process. The supervisor quickly restored an earlier copy of the control program from the AssetCentre archive, preventing any downtime.*

*"We saved over \$300,000 in just one incident using FactoryTalk AssetCentre to recover from potentially 2 hours of downtime".*  
Mining Customer



## Overview

FactoryTalk® AssetCentre provides you with a centralized tool for securing, managing, versioning, tracking and reporting automation-related asset information across your entire production system. And perhaps more importantly, it can do this automatically, with limited additional management oversight or work from employees.

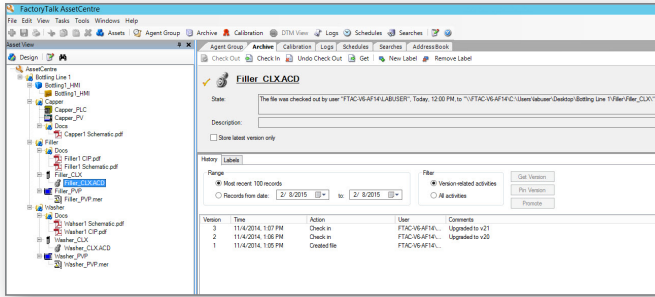
FactoryTalk AssetCentre can impact uptime, productivity, quality, employee safety and regulatory compliance. Whatever your area of concern, FactoryTalk AssetCentre and its flexible, scalable solution can help you and your organization meet your asset uptime goals.

The scalable design of FactoryTalk AssetCentre allows for easy expansion of assets and extensible (add-on) capabilities – it's adaptable from small applications to plant-wide systems. Built on a foundation that provides common base functions as well as extendable add-on capabilities, this integrated and modular design lets the system grow as your business goals and production needs change.

## Base Functions

FactoryTalk AssetCentre Server provides the capability to centrally track and manage the configuration changes that occur in your facility, while providing secure access to restrict who can perform these functions. The entire breadth of the base server functionality can assist with diagnostics and troubleshooting to reduce the time needed to maintain your production assets. The base server functions include:

LISTEN.  
THINK.  
SOLVE.®



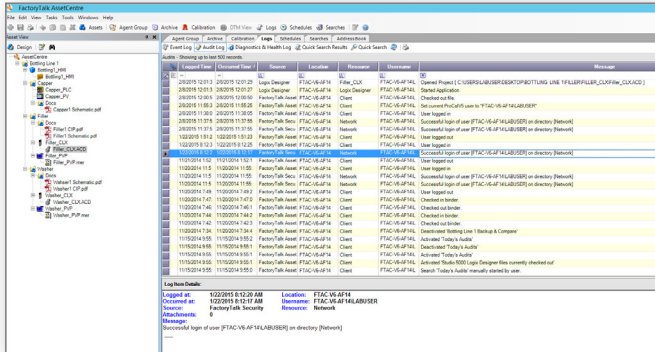
## Source Control

Source control leverages the centralized database and provides automatic version control. This provides proper file management and single master relationships. Any electronic file can be put under source control – RSLogix 5000 (.acd), Microsoft files (.doc, .xls, .ppt, etc.) Computer Aided Design (CAD) files (.dwg), and others.

## Audits

The Audit feature gathers information centrally that is generated by user interactions with FactoryTalk-enabled applications, including FactoryTalk AssetCentre. Audits are captured while connected or even disconnected from the network!

The audit trail consists of Logged Time, Occurred Time, Source, Location, Resource, Username and Message.



## Events

The Events feature gathers system-generated information centrally from FactoryTalk-enabled applications, including FactoryTalk AssetCentre. The Event logs consist of Logged Time, Occurred Time, Source, Location, Severity and Message.

## Reporting

The reporting capabilities allow scheduled or on-demand searches that include traceability information from Audit, Events or Source Control. Scheduled reports can be sent to an e-mail distribution list, or if run on demand (manually), can be printed or saved as an electronic file format of Microsoft® Excel®, Microsoft® Word, Crystal Reports®, Adobe® Acrobat®, or Rich Text Format.

## Scheduler

The Scheduler is used to run periodic tasks or reports. These are assigned to FactoryTalk AssetCentre-designated computers, or agents, to leverage unused or under-utilized computing power within your facility and are load-balanced automatically across all agents in an agent group.

Monthly Change Report Searching Audits							
Total number of record found						409	
Output limited to a maximum number of records						100	
Occurred Time	Logged Time	Source	Location	Resource	Username	Attachments	Message
10/29/2014 3:0	10/29/2014 3:0	FactoryTalk As	FTAC-V6-AF14	Client	FTAC-V6-AF14	0	User logged in
3:22 PM	3:30 PM	setCentre			\LABUSER		
10/31/2014 1:2	10/31/2014 1:2	FactoryTalk As	FTAC-V6-AF14	Client	FTAC-V6-AF14	0	Design Mode Selected
7:26 PM	7:35 PM	setCentre			\LABUSER		Added Asset Parent Asset Path: AssetCentre New Asset Name: Generic Container New Asset New Asset Age nt Group: System Default Renamed Asset Original Asset
10/31/2014 1:2	10/31/2014 1:2	FactoryTalk As	FTAC-V6-AF14	Client	FTAC-V6-AF14	0	
7:43 PM	7:45 PM	setCentre			\LABUSER		

## Security

Securing your automation system prevents unauthorized access to make changes. This is a critical first level in providing a layered security approach. FactoryTalk AssetCentre internally leverages the security provided by the FactoryTalk Services platform that can be integrated into your Windows authentication services. This standardized security model minimizes efforts to administer users and passwords on operator interfaces, historians, and engineering/ maintenance workstations. These security rights are even enforced while computers hosting FactoryTalk applications are disconnected from the network.

## Tamper Detection

FactoryTalk AssetCentre can be configured to continuously monitor Logix controller for changes. It will detect malicious changes in real time, log activities, and create a report. For example, if a contractor walks up to a panel and connects his/her laptop to a controller directly via a usb cable, goes online and modifies the program, AssetCentre will be able to capture and report it in real time. Optionally, AssetCentre can also be configured to send this report to the stakeholders via email.

## Premier Integration with Studio5000 Logix Designer

FactoryTalk AssetCentre is integrated with Studio5000 Logix Designer providing ease of use for managing versions of controller programs. Users can check-out controller programs, make edits, test out changes then check-in a new version adding appropriate comments to document the changes. This is very valuable during system commissioning or after the system is in production.

## Asset Inventory Agent

Keeping track of the hundreds, if not thousands of automation assets in your facility just got easier. With the Asset Inventory Agent, you can automate discovery and track the status of all connected devices, network switches and workstation computers across an entire facility or production operation. When your search is run, it not only gives you a list of devices, but also tracks other pertinent information like software running, firmware revision, vendor name, IP address, etc. You can also manually add attributes or values to the devices and store them within the FactoryTalk AssetCentre repository to keep a complete picture of all your automation assets. As you run future scans, the compare report would list any devices added to the network or any firmware or attribute changes that occurred on the known devices.

Name	Description	Identifying Number	Asset Class	Asset Location	Asset Status	Vendor
Allen-Bradley 1756-IB16	Allen-Bradley 1756-IB16	20180101	C-PLC	PLC	OK	Allen-Bradley
Allen-Bradley 1756-IB16	Allen-Bradley 1756-IB16	20180102	C-PLC	PLC	OK	Allen-Bradley
Allen-Bradley 1756-IB16	Allen-Bradley 1756-IB16	20180103	C-PLC	PLC	OK	Allen-Bradley
Allen-Bradley 1756-IB16	Allen-Bradley 1756-IB16	20180104	C-PLC	PLC	OK	Allen-Bradley
Allen-Bradley 1756-IB16	Allen-Bradley 1756-IB16	20180105	C-PLC	PLC	OK	Allen-Bradley
Allen-Bradley 1756-IB16	Allen-Bradley 1756-IB16	20180106	C-PLC	PLC	OK	Allen-Bradley
Allen-Bradley 1756-IB16	Allen-Bradley 1756-IB16	20180107	C-PLC	PLC	OK	Allen-Bradley
Allen-Bradley 1756-IB16	Allen-Bradley 1756-IB16	20180108	C-PLC	PLC	OK	Allen-Bradley
Allen-Bradley 1756-IB16	Allen-Bradley 1756-IB16	20180109	C-PLC	PLC	OK	Allen-Bradley
Allen-Bradley 1756-IB16	Allen-Bradley 1756-IB16	20180110	C-PLC	PLC	OK	Allen-Bradley
Allen-Bradley 1756-IB16	Allen-Bradley 1756-IB16	20180111	C-PLC	PLC	OK	Allen-Bradley
Allen-Bradley 1756-IB16	Allen-Bradley 1756-IB16	20180112	C-PLC	PLC	OK	Allen-Bradley
Allen-Bradley 1756-IB16	Allen-Bradley 1756-IB16	20180113	C-PLC	PLC	OK	Allen-Bradley
Allen-Bradley 1756-IB16	Allen-Bradley 1756-IB16	20180114	C-PLC	PLC	OK	Allen-Bradley
Allen-Bradley 1756-IB16	Allen-Bradley 1756-IB16	20180115	C-PLC	PLC	OK	Allen-Bradley
Allen-Bradley 1756-IB16	Allen-Bradley 1756-IB16	20180116	C-PLC	PLC	OK	Allen-Bradley
Allen-Bradley 1756-IB16	Allen-Bradley 1756-IB16	20180117	C-PLC	PLC	OK	Allen-Bradley
Allen-Bradley 1756-IB16	Allen-Bradley 1756-IB16	20180118	C-PLC	PLC	OK	Allen-Bradley
Allen-Bradley 1756-IB16	Allen-Bradley 1756-IB16	20180119	C-PLC	PLC	OK	Allen-Bradley
Allen-Bradley 1756-IB16	Allen-Bradley 1756-IB16	20180120	C-PLC	PLC	OK	Allen-Bradley
Allen-Bradley 1756-IB16	Allen-Bradley 1756-IB16	20180121	C-PLC	PLC	OK	Allen-Bradley
Allen-Bradley 1756-IB16	Allen-Bradley 1756-IB16	20180122	C-PLC	PLC	OK	Allen-Bradley
Allen-Bradley 1756-IB16	Allen-Bradley 1756-IB16	20180123	C-PLC	PLC	OK	Allen-Bradley
Allen-Bradley 1756-IB16	Allen-Bradley 1756-IB16	20180124	C-PLC	PLC	OK	Allen-Bradley
Allen-Bradley 1756-IB16	Allen-Bradley 1756-IB16	20180125	C-PLC	PLC	OK	Allen-Bradley
Allen-Bradley 1756-IB16	Allen-Bradley 1756-IB16	20180126	C-PLC	PLC	OK	Allen-Bradley
Allen-Bradley 1756-IB16	Allen-Bradley 1756-IB16	20180127	C-PLC	PLC	OK	Allen-Bradley
Allen-Bradley 1756-IB16	Allen-Bradley 1756-IB16	20180128	C-PLC	PLC	OK	Allen-Bradley
Allen-Bradley 1756-IB16	Allen-Bradley 1756-IB16	20180129	C-PLC	PLC	OK	Allen-Bradley
Allen-Bradley 1756-IB16	Allen-Bradley 1756-IB16	20180130	C-PLC	PLC	OK	Allen-Bradley
Allen-Bradley 1756-IB16	Allen-Bradley 1756-IB16	20180131	C-PLC	PLC	OK	Allen-Bradley

**Life cycle management** – I am an engineer and working on a project to update firmware on all devices that have an end-of-life status. I don't know how many devices I have running in production. The Asset Inventory Agent will allow me to discover all of the assets with firmware revisions, IP addresses, etc. to scope my project.

**Patch / Security vulnerability** –I receive a note from a vendor that there is a security vulnerability identified for a specific device firmware, and they have a fix for it. Normally, I would have to manually inventory each site to figure out my risk and threat exposure. With the Asset Inventory Agent, the process is simplified greatly and I can quickly discover the affected devices and put a plan in place to mitigate the risk.

## Mobile Web Client

Through this web client, you have read-only access to the Disaster Recovery Status Dashboard, Asset and Schedule Information, and Audits & Events Reports. The dashboard gives you a quick view on last search results along with drill down capability to gain more insight on failures. You can also see detailed logs and your assets under management within FactoryTalk AssetCentre.

Built on a standardized application across the Rockwell Software product family, FactoryTalk AssetCentre utilizes a

common look and feel and user experience in the mobile web client. The solution is built on HTML5 technology which allows native support for the platform of your choice spanning across iOS, Android, or Windows on a device of your choice from a smart phone or tablet, to desktop browser or a large screen TV. The client scales according to the size of the screen to present you the best possible user experience.

## Disaster Recovery

FactoryTalk AssetCentre provides control system backup that is integrated with source control to provide reliable and easy access to the latest control system configuration files. The backup system can be configured to provide a comparison of the configuration file retrieved from the plant floor device with the master file stored in source control. Users can then determine if changes have been made and take appropriate action. For supported devices, a detailed report is available identifying in detail what changes were made. These operations can be performed on an ad hoc basis or configured to execute on a scheduled basis to fit your operational needs.

## Disaster Recovery Assets Supported

FactoryTalk AssetCentre supports Disaster Recovery for Rockwell Automation devices and selected third-party assets natively. The FactoryTalk AssetCentre Archive can be used to manage the project files for these assets, as well as any other files that you might normally store on a computer hard drive or network share.

## Disaster Recovery Assets Not Natively Supported

FactoryTalk AssetCentre can be extended to support additional 3rd party devices by using the Custom Device Plug-in capability. FactoryTalk AssetCentre can interface with the 3rd party plug-in component using command line parameters to define parameters. For example, uploading a program from a 3rd party controller and comparing it to a previous version.

## Backup and Compare Schedules

Easily create Backup or Backup and Compare for any supported asset type. Schedules can be created for one or more devices, create as many schedules as you require! Set the Start time and frequency of schedule by Hourly, Daily, Weekly or Monthly. Specify by schedule and asset type backup or compare properties, i.e. Compare Options, email notifications, etc.

## Notifications

The Notification feature proactively notifies designated users when predefined system events occur. E-mail notifications could include:

- Upload and compare event statuses
- Completed, aborted or failed schedules
- Rogue candidate detection

## Gain Further Value with Add-on Capabilities

FactoryTalk AssetCentre has an evolving set of add-on capabilities that allow you to optimize and leverage your factory automation and process device investments. These optional capabilities expand upon the robust central features already found in the FactoryTalk AssetCentre server and allow you the ability to extend the value of the system as needs change within your manufacturing environment.

## Calibration Management

The FactoryTalk AssetCentre Calibration Management capability allows for a paperless calibration solution: managing calibration requirements, specifications, schedules, calibration results and reporting. When it comes to the managing of instrument calibration and system qualifications, FactoryTalk AssetCentre offers unique advantages. Whether for a single department or an entire

organization, your workflow and oversight practices can be automated, systematized and improved – particularly in a regulated environment such as 21 CFR Part 11 Food and Drug Administration (FDA) and Good Manufacturing Practices (GMP).

## Process Device Configuration

FactoryTalk AssetCentre Process Device Configuration (PDC) utilizes Field Device Tool (FDT) technology to access instrument parameters, configure and commission process devices and help with diagnostics. It gives you the ability to work with multiple vendors' instruments in one common platform, reducing overall maintenance and field time. This means you now have the freedom to choose best-in-class instruments and maintenance tools available from any of the vendors supporting FDT technology.

For more information on FDT technology, visit [www.fdtgroup.org](http://www.fdtgroup.org).

## ADVANTAGES OF FACTORYTALK® ASSETCENTRE ADD-ON OPTIONS

### FactoryTalk® AssetCentre Disaster Recovery

- Secure access to the control system
- Prevent unauthorized or unwanted changes from occurring in running processes or files
- Have a documented audit trail for Rockwell Automation devices of who made what changes and when those changes were made to device programs
- Can maintain version control for all system files
- Always know where to find the most current version of your program
- Can confirm that the correct and validated configuration or programming is currently in a device
- **Extend coverage by adding support for 3rd party vendor devices that are not natively supported**

### FactoryTalk® AssetCentre Calibration Management

- Time to complete calibrations can be reduced by over 50%
- Allows compliance (automatic documentation and reporting)
- Helps improve staff effectiveness (ease of accessing the right information)

- Helps improve product quality and helps reduce process mishaps (instrument performing as intended)
- Helps allow a more repeatable process (not operator specific)
- Helps to lower production cost (closer to specification thresholds, removing safeties)
- Easy review of any aspect of activities
- One system!

### FactoryTalk AssetCentre Process Device Configuration

- Manage installed Device Type Manager (DTM) with the DTM Catalog
- Build the DTM Networks from FactoryTalk AssetCentre client computers to the physical devices
- View and edit the configuration for a device (online or offline)
- Upload and download the configuration for a device
- Print the configuration for a device
- Manage multiple instrument types across multiple vendors
- Manage multiple instrument types across multiple protocols (HART, Profibus and Foundation Fieldbus)
- Remotely connect to instruments to diagnose and correct problems quickly

## Get More Information

For ordering information, contact your local Rockwell Automation sales office or Allen-Bradley distributor. Or learn more by visiting [www.rockwellsoftware.com](http://www.rockwellsoftware.com)

FactoryTalk AssetCentre, FactoryTalk Directory, FactoryTalk Security, FactoryTalk View Site Edition, Logix5000, MicroLogix, PLC-5, SLC-500, RSLinx, RSLogix 5, RSLogix 500, RSLogix 5000, PanelView Plus and Rockwell Software are trademarks or registered trademarks of Rockwell Automation, Inc. All other trademarks and registered trademarks are the property of their respective companies.

**[www.rockwellautomation.com](http://www.rockwellautomation.com)**

### Power, Control and Information Solutions Headquarters

Americas: Rockwell Automation, 1201 South Second Street, Milwaukee, WI 53204 USA, Tel: (1) 414.382.2000, Fax: (1) 414.382.4444  
Europe/Middle East/Africa: Rockwell Automation, Vorstlaan/Boulevard du Souverain 36, 1170 Brussels, Belgium, Tel: (32) 2 663 0600, Fax: (32) 2 663 0640  
Asia Pacific: Rockwell Automation, Level 14, Core F, Cyberport 3, 100 Cyberport Road, Hong Kong, Tel: (852) 2887 4788, Fax: (852) 2508 1846