

FactoryTalk® View Machine Edition

Versatile Machine-Level HMI Providing Software Flexibility

FactoryTalk® View Machine Edition (ME) software is a versatile HMI application that provides a dedicated and powerful solution for machine-level operator interface devices. As an integral element of the Rockwell Automation® visualization solution, FactoryTalk® View Machine Edition provides superior graphics, runtime user management, language switching and faster commissioning time through a common development environment.



Features and Benefits

Premier integration with Logix controllers

- No need to create and maintain a separate HMI tag database – define tags once in the Logix controller, then access them throughout your system
- Language switching happens in the controller itself with no import/export necessary

Productivity

- Save design and troubleshooting time with rich, reusable graphics and animation capabilities, global objects and a library of faceplates that show status and diagnostic information
- Save commissioning time by emulating the application on the design workstation
- Design time language switching delivers the ability to configure multiple languages that easily switch at runtime

Platform Support

- Operating systems include Microsoft® Windows 10, Windows 8, Windows 7 and more
- Supports PanelView™ Plus 6, PanelView™ Plus 7, MobileView™ and ME Station running on an industrial computer
- Legacy products can be easily upgraded to the latest FactoryTalk® ME version

Mobility

- Virtual network computing (VNC) allows remote access to your plant floor terminal from anywhere at any time
- Extend your applications to your favorite iOS or Android mobile device for improved real-time decision making using FactoryTalk® ViewPoint
- Publish HMI screens as-is or create mobile device-specific screens with FactoryTalk ViewPoint for better visibility on a smaller screen

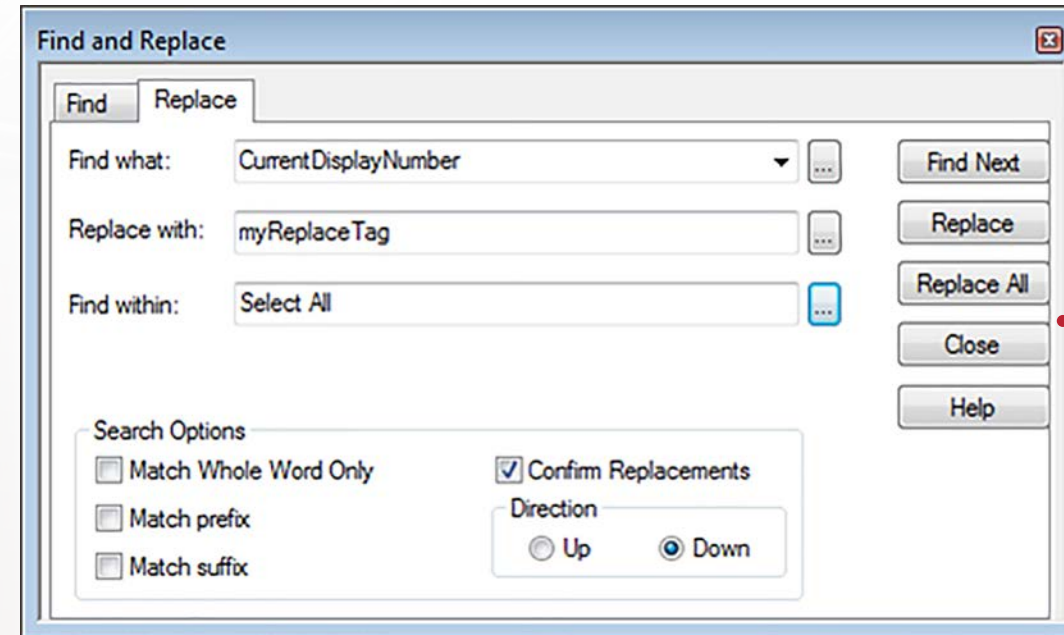
LISTEN.
THINK.
SOLVE.

Engineering and Maintenance

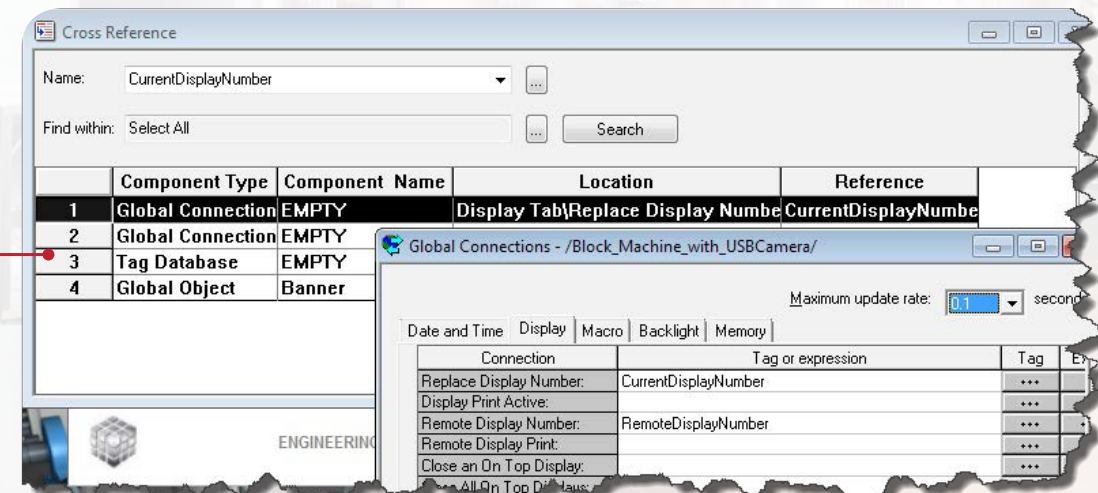
Delivering tools to quickly develop applications and easily maintain systems

REDUCE DESIGN AND COMMISSIONING TIME

- Common installation process for Logix Designer, View Designer and FactoryTalk® View interfaces
- Translated languages live in the controller making it available for the HMI using Logix extended tag properties, helping to reduce duplication errors and streamline the design
- Search and Replace function allows more efficiency in updating and maintaining projects
- Cross Reference capability allows hot linking to specific tag location
- Design time language switching simplifies commissioning time, enabling you to quickly verify the localized content on your displays
- Global objects allow you to create your own custom, reusable content similar to Add-On Instruction for Logix controllers
- Test your application from your desktop PC using FactoryTalk View emulation mode
- Utilizes CSV import/export of Data Model configuration
- Imports many legacy applications



Save time by managing text and tag changes for multiple projects.



Cross Reference table generates hot linked tag references.

Operations

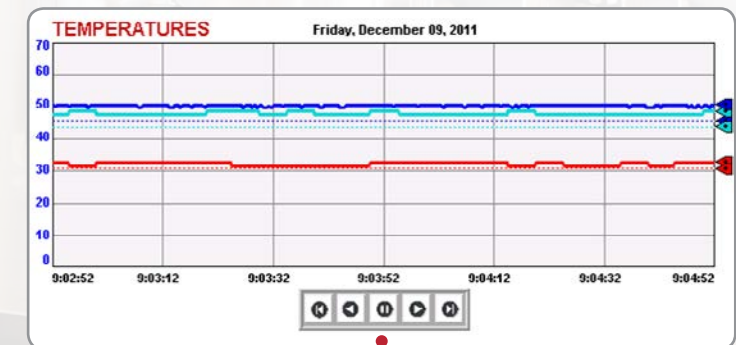
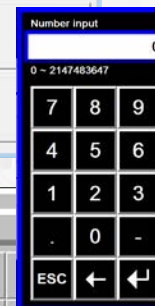
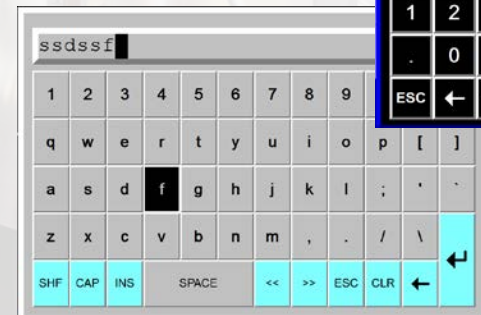
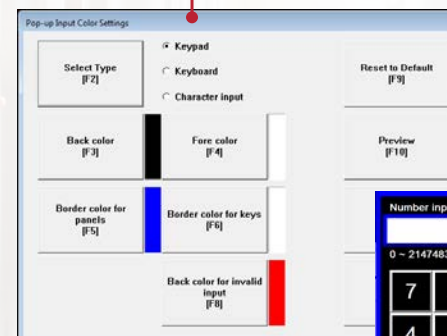
Delivering robust products that have easy to understand display screens, quick access to alarming, and system-wide diagnostics.

EXPAND MACHINE FLEXIBILITY AND CAPABILITY

- Data logging enables you to show real-time or historical process data, allowing operators to quickly view operational data
- Increase efficiency by easily downloading consistent machine setup or product recipe information using the recipe function
- Connects to both Rockwell Automation® and non-Rockwell Automation devices
- Launch up to five displays at startup
- Using Logix Extended Tag Properties allows operators and maintenance personnel to quickly switch the HMI screen to their native language, reducing training, downtime and troubleshooting
- Create context-sensitive alarm behaviors with Alarm Identifier utilizing alarms, videos or pdf's
- Customize built-in keyboard, keypad and character input interfaces with preferred color references for your organization with ability to preview without running the application

Save design time by utilizing extended tag properties eliminating the need to program the HMI separately.

Customize keyboard interfaces to better match the color scheme of the application.

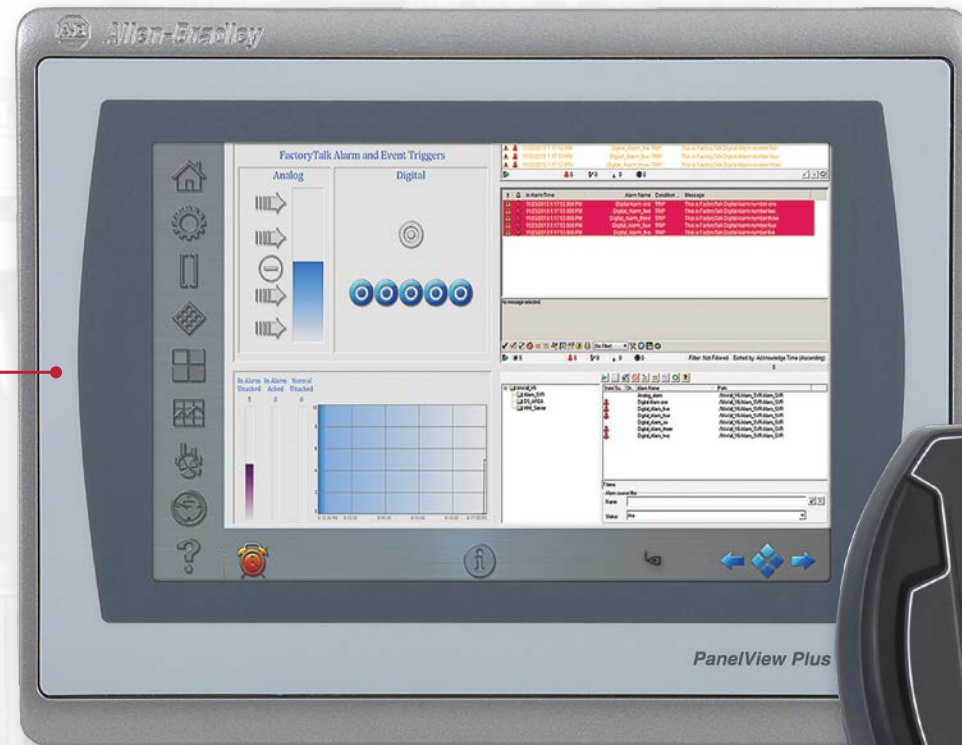


Log application data for longer periods. Supports up to 1,000,000 records.

Electrical Operation Interface Terminals

Directly access non-controller devices to improve communications, timing and production

PanelView Plus 7 has built-in device level ring (DLR) Ethernet capabilities and resistive touch screen.



PanelView Plus Standard offers device level ring (DLR) as an option.



MobileView™ Tethered Operator Terminals put the view of your application in your hands.



Extending Your HMI

Delivering anytime, anywhere access to contextualized manufacturing data for more informed, faster business decisions.

MAKE YOUR HMI MOBILE

FactoryTalk® ViewPoint allows you to view and interact with your FactoryTalk View Machine Edition (ME) applications from a web browser or your favorite mobile device, providing continuous system visibility and improving real-time decision-making. FactoryTalk ViewPoint delivers:

- A truly interactive web-based HMI experience without requiring any additional development
- Configurable security to provide users with read only or read-write access
- Real time trending
- A maintenance free browser-based client with no additional software to install and configure
- Support for Windows, iOS and Android with HTML 5 rendering

For More Information

View the *Make Your HMI Mobile* video or go to <http://bit.ly/1LSppAn>

FactoryTalk® ViewPoint is included with PanelView™ Plus firmware

Compatible with PanelView™ Plus 6, 7 Standard and Performance form factors



No license or FactoryTalk Activation required

Supports a single client connection



More Information

Visit us at:

<http://www.rockwellsoftware.com>

View the *Make Your HMI Mobile* video

Learn tips about *Designing for Mobility*

Product Compatibility and Download Center

Check out the latest HMI news from Rockwell Automation

Learn more about some of the latest FactoryTalk View ME features

Ordering Information

Contact your local Rockwell Automation® sales office or Allen-Bradley® distributor.

Allen-Bradley, LISTEN. THINK. SOLVE., FactoryTalk, PanelView, RSLogix and PlantPAx are trademarks of Rockwell Automation, Inc. All other trademarks and registered trademarks are the property of their respective owners.

www.rockwellautomation.com

Power, Control and Information Solutions Headquarters

Americas: Rockwell Automation, 1201 South Second Street, Milwaukee, WI 53204-2496 USA, Tel: (1) 414.382.2000, Fax: (1) 414.382.4444

Europe/Middle East/Africa: Rockwell Automation NV, Pegasus Park, De Kleetlaan 12a, 1831 Diegem, Belgium, Tel: (32) 2 663 0600, Fax: (32) 2 663 0640

Asia Pacific: Rockwell Automation, Level 14, Core F, Cyberport 3, 100 Cyberport Road, Hong Kong, Tel: (852) 2887 4788, Fax: (852) 2508 1846

Publication FTALK-PP012F-EN-P – May 2017

Copyright © 2017 Rockwell Automation, Inc. All Rights Reserved. Printed in USA.