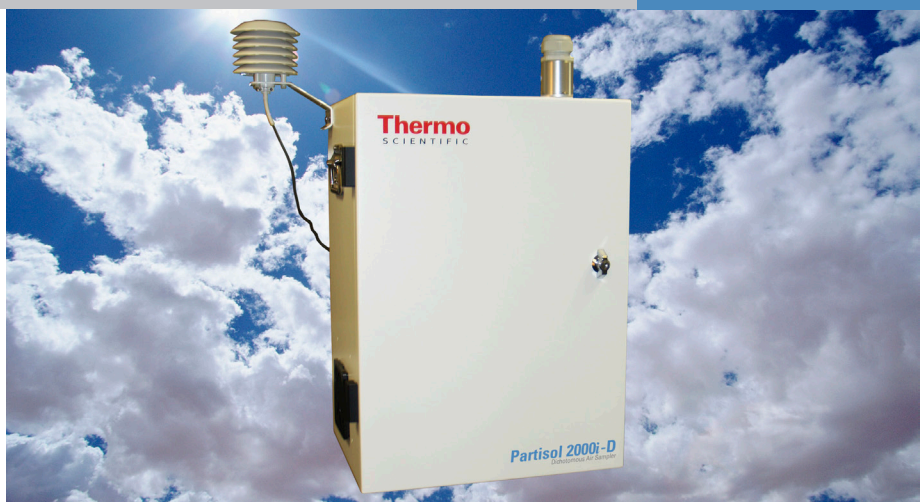
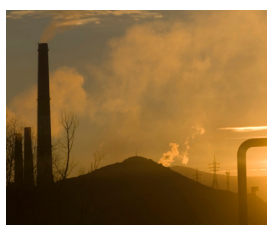


Federal Equivalent Method ambient sampler featuring simultaneous collection of fine and coarse particles.

Thermo Scientific Partisol 2000i-D Dichotomous Air Sampler



Key Features

- U.S. EPA PM-2.5, PM-10 and PM-Coarse Equivalent Sampler
- Enhanced user interface and iSeries communication capabilities
- Improved data downloads
- Collection of fine (PM-2.5) and coarse fractions of PM-10 on two separate 47mm filters
- Low maintenance requirements

The Thermo Scientific Partisol 2000i-D Dichotomous Air Sampler simultaneously collects high quality samples of fine and coarse ambient particulate matter (PM). Developed on the renowned iSeries software platform design, this sampler also features USB ports for improved data downloads.

The sampler utilizes a virtual impactor to separate an incoming PM-10 air stream into its fine (PM-2.5) and coarse (PM-10 minus PM-2.5) components.

The Partisol® 2000i-D sampler utilizes two FRM style filter cassettes to house the 47mm filters used to collect the coarse and fine PM. Both sample filter cassettes are installed in a convenient filter cassette carrier. The filter exchange assembly allows fast and simple collection for filter removal.

The Partisol 2000i-D sampler contains an onboard microprocessor operating system and a large internal data storage buffer. By using the menu driven key-pad, the unit can be programmed to sample for any desired time period with user-defined start and end dates.

The iSeries communication capabilities of the Partisol 2000i-D sampler offers easier connectivity through an enhanced user interface.

Additional iSeries features also include:

- Flash memory for increased data storage
- Enhanced Ethernet connectivity
- Remote data access
- iPort communication software
- Large interface screen

Product Specifications

To maintain optimal product performance, you need immediate access to experts worldwide, as well as priority status when your air quality equipment needs repair or replacement. We offer comprehensive, flexible support solutions for all phases of the product life cycle. Through predictable, fixed-cost pricing, our services help protect the return on investment and total cost of ownership of your Thermo Scientific air quality products.

Thermo Scientific Partisol 2000i-D Dichotomous Air Sampler

Filter Holders and Media	Accommodates 47mm filter in two sample positions For U.S. EPA PM-10 and PM-2.5 sampling: Teflon® 2µm pore size membrane filter (regulation required) For U.S. EPA PM-10 reference sampling: Pallflex TX-40, quartz filter and Teflon® materials
Sample flow control and Reporting	Activol flow control system using mass flow controller. Controls at rates ranging at 15 volumetric L/min for fine sample and 1.67lpm for coarse sample. The sampler displays the current volumetric flow rate (l/min.).
Audit/Calibration	Direct software support for single-point and multi-point audit/calibrations of the volumetric flow
Internal Data Storage	86 days of Interval data (stored every 5 minutes); 32 filter data records, and input data (30 minute default)
Data Input and Output	Keypad/display for data retrieval and user programming, RS232 interface, Wind vane/anemometer connection with 24Vdc power output and 2 0-5 Vdc inputs for wind speed and direction, RS485 interface connection
Operational Temperature	-40°F to 122°F (-40°C to 50°C)
Power Requirements	2.2A @ 120 VAC, 1.1A @ 240 VAC
Physical Dimensions	16" (41cm) W x 24" (61cm) H x 13" (33cm) D (<i>inlet system adds 31" to height</i>) Stand: 42" (108cm) W x 32" (82cm) H x 18" (46cm) D
Weight	75lbs (32kg)
Safety and Electrical Designations	CE: 89/336/EEC Electromagnetic Compatibility (EMC Directive), EN 61326:1997 + A1:19985 + A2 2001 73/23/EEC Low Voltage Directive (LVD), EN 61010-1:2001 UL and CSA Equivalent approval
Regulatory Designations	U.S. EPA PM-2.5 Equivalent Sampler: EQPS-0509-177 U.S. EPA PM-Coarse Equivalent Sampler: EQPS-0509-178 U.S. EPA PM-10 Equivalent Sampler: EQPS-0311-197

Ordering Information

Partisol 2000i-D Dichotomous Air Sampler

Choose from the following configurations/options to customize your own Partisol 2000i-D

1. Voltage options:

A = PM-10, 120 VAC 50/60 Hz
B = PM-10, 220 VAC 50/ 60 Hz
Y = Dichot 50/50, 120 VAC 50/60 Hz
Z = Dichot 50/50, 240 VAC 50/60Hz

2. Inlet:

E = PM-10 U.S. EPA
T = PM-10 Traditional

Your Order Code: 2000i -D _ _

Lit_2000iDAQI_2/11R1

© 2011 Thermo Fisher Scientific Inc. All rights reserved. All trademarks are the property of Thermo Fisher Scientific Inc. and its subsidiaries.

This specification sheet is for informational purposes only and is subject to change without notice. Thermo Fisher Scientific makes no warranties, expressed or implied, in this product summary. Not all products are available in all countries. Please consult your local sales representative for details.

This product is manufactured in a plant whose quality management system is ISO 9001 certified.

Air Quality Instruments

27 Forge Parkway
Franklin, MA 02038 USA

(866) 282-0430
(508) 520-0430
(508) 520-1460 fax

www.thermoscientific.com/AQI

Thermo
SCIENTIFIC